



# ROLAND PARK CIVIC LEAGUE

Annual Meeting

May 24, 2017

President's Report

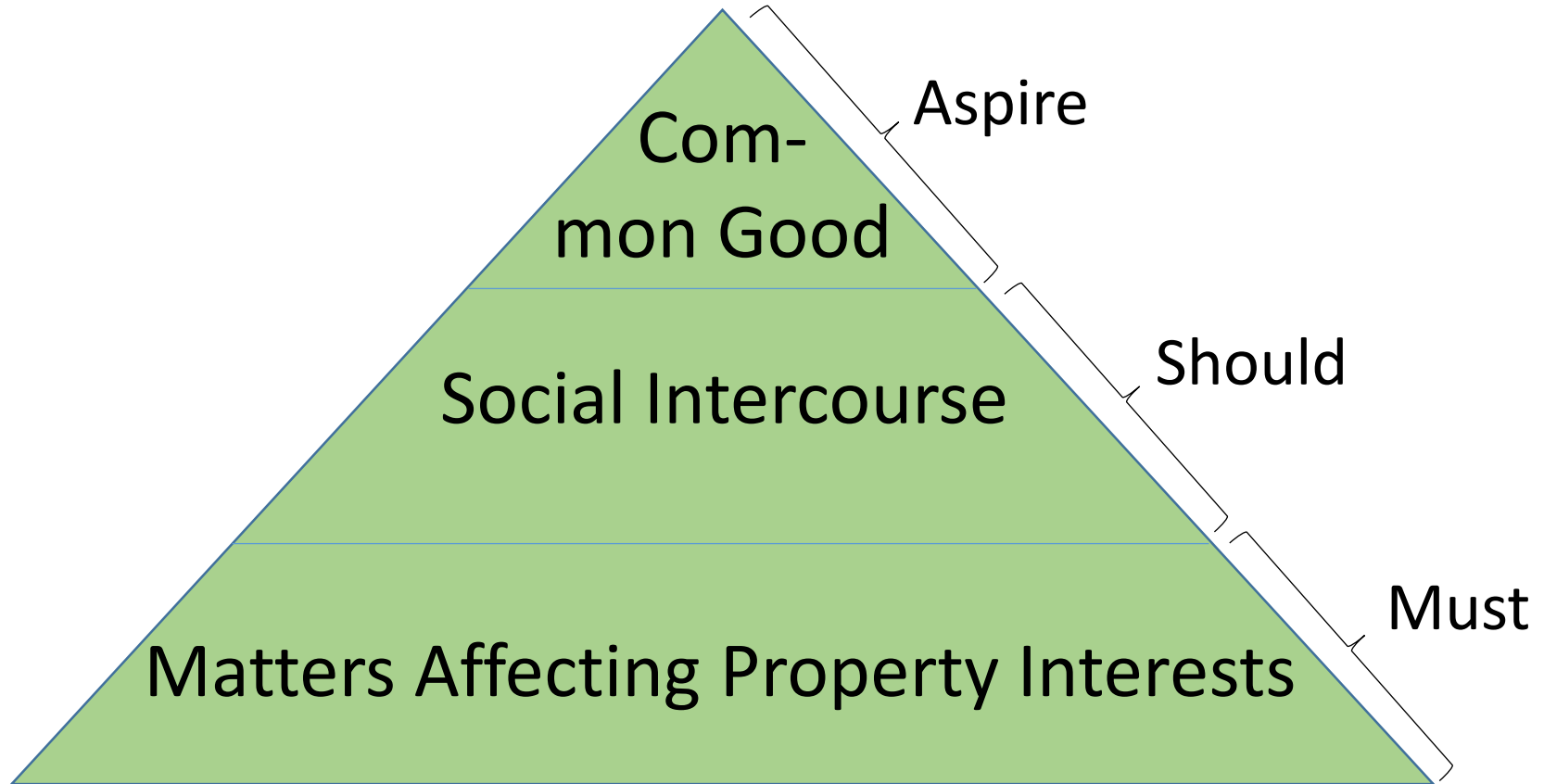
# Year in brief review: 1 - Purpose

- ❖ Focus on duties & Membership constituency philosophy
- ❖ From our 1907 charter:

*“...the said corporation so formed is a corporation for the maintenance of an educational, moral, social and beneficial association of those persons who shall be members of said corporation, for the promotion of friendly social intercourse between said members, and for taking action from time to time on matters affecting the property interests of its members in Roland Park and vicinity....for the purpose of maintaining, or assisting in the maintenance of a volunteer fire department in Roland Park, and, in general, for the purpose of fostering the common good and welfare of the members of said corporation....”*

# Year in brief review: 1 – Purpose Continued

❖ Charter: my interpretation of a hierarchy of purposes



# Year in brief review: 2 - Processes

- ❖ Confront our community conflict via ad hoc committees
  - By-Laws
  - Cycle Track
- ❖ Develop & practice sound management
  - Finance
  - Communications
- ❖ Maintain acumen in routine business (RP office duties, Architectural, Maintenance, etc)

# Year in brief review: 3 - Intervening Events

## ❖ Molly McCauley murder

- Subsequent focus on Public Safety

## ❖ Transform Baltimore Rezoning conclusion

## ❖ City administration transition

# Going forward.....

## ❖ Issues:

- Belvedere 2 development (traffic & school demand)
- Air BNB in Roland Park (covenant enforcement)
- Establish a committee to continue advocating for a safe & 'Complete Street' for Roland Avenue

## ❖ Process:

- Prioritize the formation & functioning of committees
- Develop policies & plans - COI, Project approvals, Communications
- RP R&M by-laws modernization; other CL by-laws tweaks?

# Reflections

- ❖ Promote a culture of Transparency, Civility, Inclusion, & Objectivity
- ❖ By hitting issues head-on, employing the designed committee structure, & modeling desired behavior
- ❖ My scorecard on the above
- ❖ My thanks to contributors and constructive critics



# ROLAND PARK CIVIC LEAGUE

Annual Meeting

May 24, 2017

Treasurer's Report



# Finance Committee Update

## ❖ Committee Members:

- Trish Carroll (Chair)
- Ian MacFarlane
- Tim Schere
- John Kevin
- Cara Kohler
- Beth Hayes

# Finance Committee Update

- ❖ Committee meets regularly to review and approve CL & RM financials
- ❖ Civic League net income *negative* last year
  - Ciclovía & Advocacy expenses
- ❖ Roads & Maintenance net income *positive* last year
  - Full fees paid by residents increased
- ❖ Cash Reserves
  - CL Checking & MM Fund balance 4/30/17: \$113,895
  - R&M Checking & Savings balance 4/30/17: \$133,347
- ❖ Priorities for 2017-18
  - Develop budgets for both CL & R&M

# CIVIC LEAGUE – INCOME & EXPENSES

	Apr. 30, 2017	Prior 5 Yrs' Avg
<b>Total Income (Dues &amp; Other Income)</b>	<b>\$38,099</b>	<b>\$35,495</b>
<b>Expenses:</b>	<b>(\$)</b>	<b>(\$)</b>
Advocacy (CT & BCC):	5,372	0
CL Meetings:	2,774	1,111
Office, Payroll & Administrative:	21,729	14,591
Events (Ciclovía):	8,185	2,400
Charitable Donations:	4,500	11,794
Miscellaneous (Trees):	4,708	2,563
<b>Total Expenses</b>	<b>47,268</b>	<b>32,459</b>
<b>NET INCOME</b>	<b>-\$9,169</b>	<b>\$3,036</b>

# ROADS & MAINTENANCE – INCOME & EXPENSES

	Apr. 30, 2017	Prior 5 Yrs' Avg
<b>Total Income (Fees)</b>	<b>\$213,638</b>	<b>\$103,164</b>
<b>Expenses:</b>	<b>(\$)</b>	<b>(\$)</b>
Contract Svcs:	132,988	75,173
Office & Administrative:	12,158	12,034
Payroll:	20,519	15,406
<b>Total Expenses</b>	<b>165,665</b>	<b>102,613</b>
<b>NET INCOME</b>	<b>\$47,973</b>	<b>\$551</b>



# ROLAND PARK CIVIC LEAGUE

Annual Meeting  
May 24, 2017

Communications  
Committee Report

# Communications Committee - Ad hoc

- ❖ Charged to review current practices and make recommendations for enhancements
- ❖ Word of Mouth, RP News and Website
- ❖ Community awareness and needs- Survey Online
- ❖ [www.surveymonkey.com/r/RPCL2017](http://www.surveymonkey.com/r/RPCL2017)
- ❖ Results to drive prioritization of future efforts
- ❖ Get Involved-opportunities to volunteer



# ROLAND PARK CIVIC LEAGUE

Annual Meeting  
May 24, 2017

Roads & Maintenance  
Report

# R&M Board members

## ❖ Plat 1:

- Tom Carlson – new president
- Gedge Rosson

## ❖ Plat 2:

- Keats Smith

## ❖ Plat 3:

- Laura Grier
- Mark Mobley
- Kathleen Truelove – outgoing president



# R&M Board members

## ❖ Plat 4:

- Jim Hanna

## ❖ Plat 5:

- Melanie Harwood
- Andy Niazy

## ❖ Plat 6:

- Geoff Brown, secretary

# % OF PROPERTIES UNDER COVENANT

- ❖ 100% of the 281 Plat 1 properties have covenants which are part of the original deeds from RP Co.
  - These covenants do not expire.
  - Deeds prior to mid 1901 do not contain restrictions on changes to the property.

# **% OF PROPERTIES UNDER COVENANT**

**❖ 74% (537/726) of properties in Plats 2 – 6 are under modern renewal covenants which run with the land and do not expire.**

# Applications 5/16 – 4/17

❖ 78 applications were received

❖ All were approved

- Most at first review
- Others after modifications



# **BALTIMORE CITY FIRE DEPARTMENT**

## **Truck 25**

**Truck 25 & Engine 44**

**Roland Park**

**2 Upland Road**

**Baltimore, Maryland 21210**



The station of Engine 44 was designed by Wyatt and Nolting Architects and constructed in 1895.

It opened as Baltimore County Fire Station 11 and was used concurrently as a Baltimore County police station.

In 1919, Baltimore City annexed approximately 60 square miles of Baltimore County and Anne Arundel County. The Community of Roland Park was part of this annexation.



On July 1, 1919 Baltimore County Fire Station 11 became Baltimore City Engine 44 as part of the City's annexation. Other County stations that were part of the annexation were Highlandtown Station 8, Gardenville Station 9.

On November 6, 1926 Truck Company 25 was organized and placed in service at the quarters of Engine 44.



# Dimensions

## Truck 25

8 ft. wide and 9 FT 9.25 IN. Height



## Bay Area

Maximum clearance







Since 2008 the City has invested over 100K in repairs and improvements, not limited to:

-Electrical Upgrades

- Exhaust removal system for apparatus
- Lead study and abatement
- Window dormers
- Mortar joints
- Installation of overhead doors



The Roland Park community graciously donated funds for a new kitchen and sitting room.

We are in the process of replacing the roof at an anticipated cost is not yet determined.

There are considerable additional repairs that will have to be made after the roof replacement.



## T25 Ladder Clearance



- The photo shows the distance between the lowest point (door header) in the ceiling (red area) and the top of the ladder when the truck is in the station (gray bottom area).





- It should be noted that the entry angle utilized by T25 allows for an approximate 1  $\frac{3}{4}$  inch clearance. The maximum 10 foot clearance reflects the variations in the surface grade.
- When T25 is out for maintenance there is no other Truck in the fleet that can fit in T25.



## T25 Replacement Efforts



In FY2016 BCFD began the process to replace T25 with a new ladder truck.

Due to the dimensions of the stations it was necessary to develop customized specifications that resulted in higher costs

Only one vendor responded to our request for a lower profile ladder truck at a final cost of \$1.1 million (\$220K more than a non custom truck)

The height of the new truck is 10 ft. 1 in.



# New custom-built T25

## Pros

- New piece of apparatus and warranty



# New custom-built T25

## Cons

- The height of the truck will be 10 ft. 1 in. with less than an inch clearance adjustment for the entry angle
- Loss of ladder reach (going from 100 ft. to 88 ft.)





# New custom-built T25

## Cons

- Loss of equipment and compartment space
- Cannot use snow chains on tires
- Any changes in sidewalk, bay floor or driveway grade prevents truck access to bay





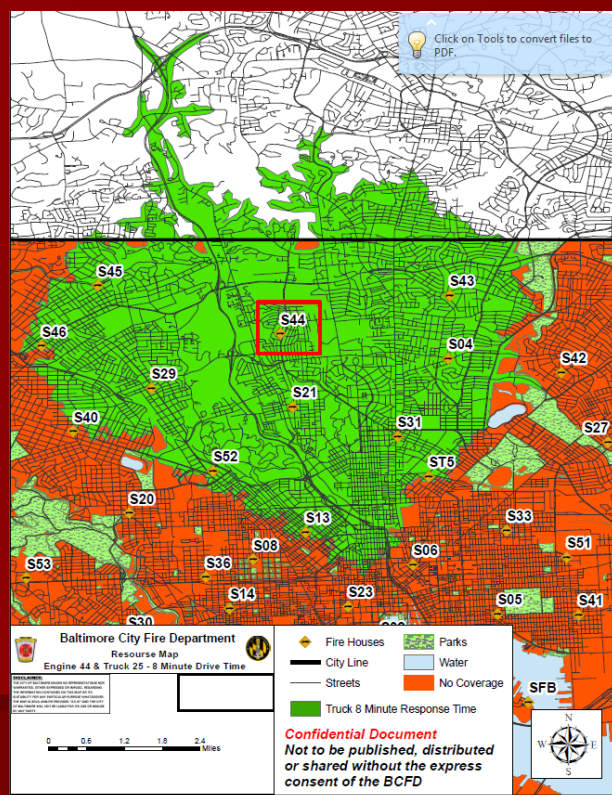
# Operational Changes



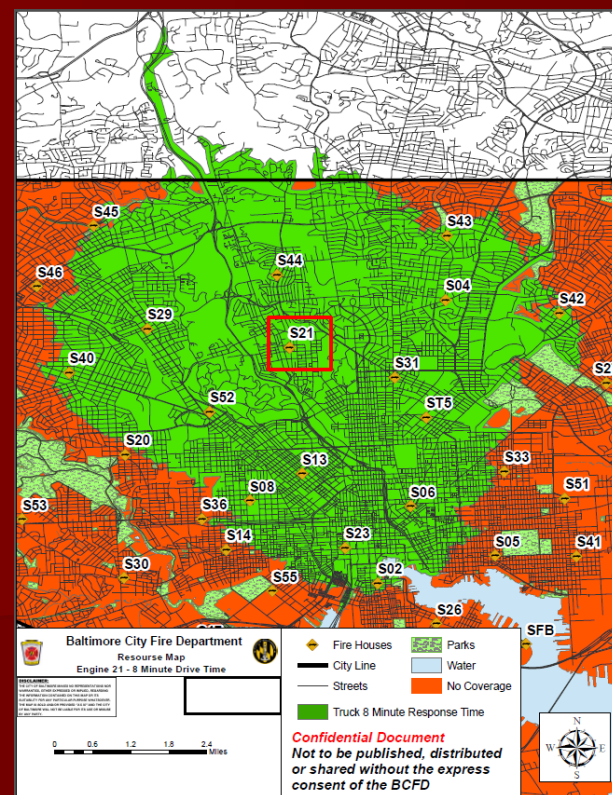
# STATION COVERAGE CAPABILITY



**T25 - 8 minute response coverage from current location**



**T25 - 8 minute response coverage from E21**





# Response Data

## Calendar Year 2016 Response Data

- **Station of E21:**

EMS Responses:	1963
Suppression Responses:	553
Actual Fires:	24
- **Station of E44 -T25:**

EMS Responses:	1371
Suppression Responses:	573
Actual Fires:	22



# Current Locations of Apparatus



Station of E44 & T25



2 Upland Road

Station of E21 & M19



3724 Roland Avenue





# 2 Upland Road

## Current Apparatus



Engine 44

Truck 25



# 2 Upland Road

## Future Apparatus



Engine 44



Medic 19





# 3724 Roland Avenue



## Current Apparatus



Engine 21



Medic 19



# 3724 Roland Avenue

## Future Apparatus



Photo Copyright © - stephen skipton

EmergencyRigs.net



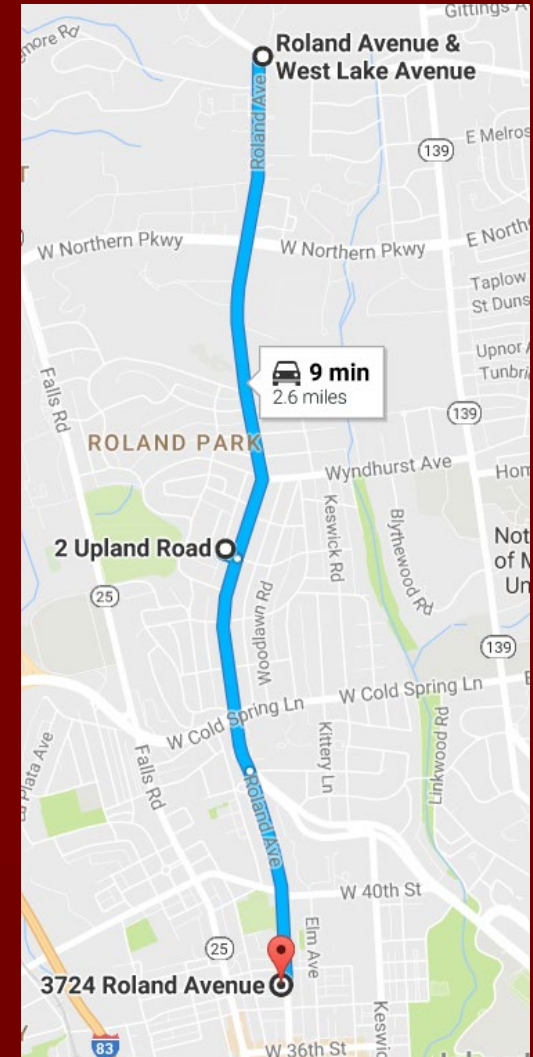
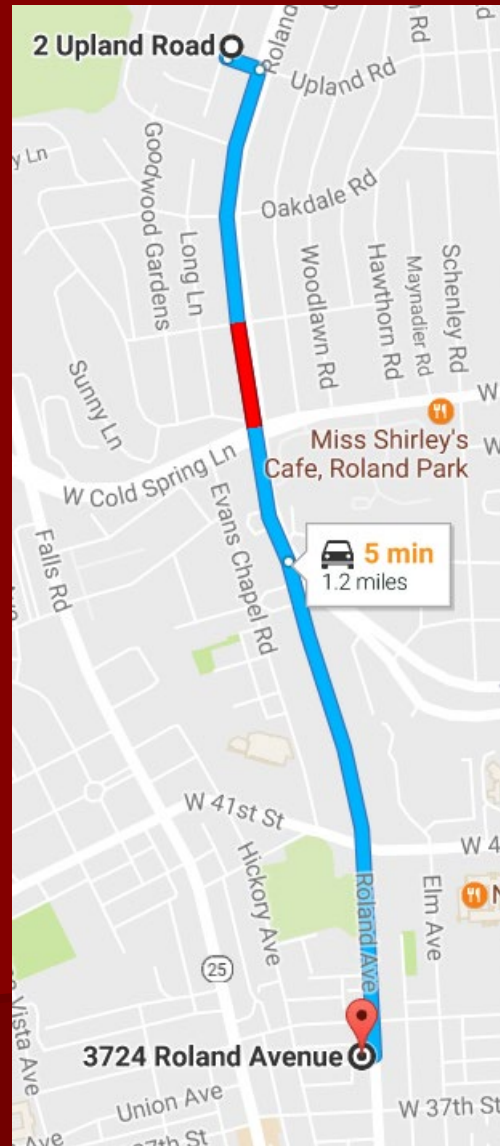
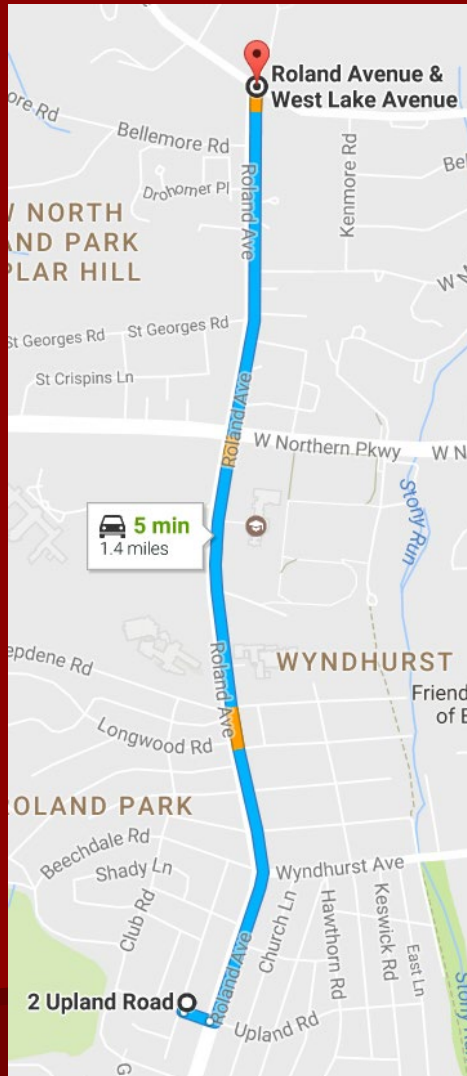
### Engine 21

### New Truck 25





# Response Routes





# Questions



# ROLAND PARK CIVIC LEAGUE

Annual Meeting  
May 24, 2017

Cycle Track  
Committee Report

# Cycle Track Committee

## ❖ Members

- Andrew Marani (chair)
- Chris McSherry
- Tracie Choi
- Leslie Goldsmith
- Mary Kay Battafarano
- Joel Schildbach
- Evynn Overton
- Matthew Eshleman
- Dan Levitov
- Henry Kay – Wyndhurst

[Roland Park Cycle Track Committee Website](#)

# Cycle Track Committee



**Committee members met monthly to discuss collection of information, share that data, and develop next steps.**

# Consensus Statement

*Either restore curbside parking with a wider, safer bike lane and slower traffic, or partner with the community to create a complete street that works for everyone.*

RPCL Board accepted and will use to guide next steps.

# Priorities

- ❖ Safety is number one concern for all users of Roland Avenue
- ❖ Immediately address alignment in 2 community anchor blocks (Eddie's and St. David's)
- ❖ Speed remains high, >50 % drivers drive 10mph over limit
- ❖ All lanes should meet or exceed design minimums
- ❖ Safer parking to minimize property damage and risk of injury
- ❖ Safer facility for cyclists
- ❖ Reduce conflicts between cars, cyclists and pedestrians
- ❖ Additionally: Enforcement, Maintenance, Signage, Aesthetics

# Next Steps

- ❖ Results of City's intercept survey and review due next week.
- ❖ Establish new Committee to work with the City to pursue a correction plan and implementation schedule
- ❖ Request Engineering Survey within 90 days for completion by September 1, 2017 or sooner.
- ❖ Community Involvement and communication to continue